
StorEdge[®] Three Phase Inverter

SE5K-RWS / SE7K-RWS / SE8K-RWS / SE10K-RWS



STOREDGE[®]

Ideal solution for three phase installations with battery storage

- Simple installation with single inverter for managing both PV production and battery storage
- More energy using DC-coupled solution architecture that stores PV power directly to the battery without AC conversion losses
- Quick and easy inverter commissioning directly from a smartphone using the SolarEdge SetApp
- Designed to eliminate high voltage during installation, maintenance, or firefighting for enhanced safety
- Built-in module-level monitoring and full visibility of battery status, PV production, and self-consumption data
- Allows connection of low voltage 48V batteries from multiple battery vendors to provide greater flexibility

/ StorEdge® Three Phase Inverter

SE5K-RWS / SE7K-RWS / SE8K-RWS / SE10K-RWS

Applicable for inverters with part number	SEXX-XXS48XXXX				
	SE5K-RWS	SE7K-RWS	SE8K-RWS	SE10K-RWS	
OUTPUT					
Rated AC Power Output	5000	7000	8000	10000	VA
Maximum AC Power Output	5000	7000	8000	10000	VA
AC Output Voltage — Line to Line / Line to Neutral (Nominal)	380/220 ; 400/230				Vac
AC Output Voltage — Line to Neutral Range	184 - 264.5				Vac
AC Frequency	50/60 ± 5				Hz
Maximum Continuous Output Current (per Phase)	8	11.5	13	16	A
Residual Current Detector / Residual Current Step Detector	300 / 30				mA
Grids Supported — Three Phase	3 / N / PE (WYE with Neutral)				
Utility Monitoring, Islanding Protection, Configurable Power Factor, Country Configurable Thresholds	Yes				
INPUT PV					
Maximum DC Power (Module STC)	6750	9450	10800	13500	W
Transformer-less, Ungrounded	Yes				
Maximum Input Voltage	900				Vdc
Nominal DC Input Voltage	750				Vdc
Maximum Input Current	8.5	12	13.5	16.5	Adc
Reverse-Polarity Protection	Yes				
Ground-Fault Isolation Detection	700kΩ Sensitivity				
Maximum Inverter Efficiency	98				%
European Weighted Efficiency	97.3	97.4	97.6		%
INPUT BATTERY					
Supported Battery Types ⁽¹⁾	SolarEdge Home Battery 48V BAT-05K48M0B-01 LG Chem RESU3.3, RESU6.5, RESU10, RESU12, RESU13 ⁽²⁾ , BYD Battery-Box LV 3.5, 7.0, 10.5, 14.0 BYD Battery-Box Premium LVS 4.0, 8.0, 12.0, 16.0, 20.0, 24.0				
Number of Batteries per Inverter	1				
Maximum DC Power	5000				W
Input Voltage Range	40-62				Vdc
Maximum Continuous Input Current	130				Adc
Peak Battery to Grid discharge Efficiency	96.1				%
Battery Communication	CAN				
ADDITIONAL FEATURES					
Supported Communication Interfaces	2 x RS485, Ethernet, ZigBee communications for Smart Energy ⁽³⁾ , Wi-Fi ⁽⁴⁾ , Built-in cellular (optional)				
STANDARD COMPLIANCE					
Safety	IEC-62109				
Grid Connection Standards ⁽⁴⁾	VDE 0126-1-1, VDE-AR-N-4105, G98 / G99				
Emissions	IEC61000-6-2, IEC61000-6-3, IEC61000-3-11, IEC61000-3-12				
RoHS	Yes				
INSTALLATION SPECIFICATIONS					
AC Output – Cable Gland Diameter	15 - 21				mm
Battery DC – Cable Gland Diameter	2 x 8-11				mm
PV DC Input	2 x MC4 pair				
Dimensions (H x W x D)	853 x 316 x 193				mm
Weight	37				kg
Operating Temperature Range	-40 to +60				°C
Cooling	Internal and external fans				
Noise	< 50				dBA
Protection Rating	IP65 — outdoor and indoor				
Mounting	Brackets provided				

(1) For supported battery models refer to <https://www.solaredge.com/sites/default/files/se-storedge-3ph-inverter-supported-system-configurations-app-note.pdf>

(2) When connecting two batteries together with RESU Plus box, any combination of LG RESU 3.3, 6.5, 10 and 12 is supported. RESU 13 can only be connected to another RESU 13.

(3) For more information refer to: <https://www.solaredge.com/sites/default/files/se-zigbee-plug-in-wireless-communication-for-setapp-datasheet.pdf>.

(4) Wi-Fi connectivity requires an external antenna. For more information refer to: <https://www.solaredge.com/sites/default/files/se-wifi-zigbee-antenna-datasheet.pdf>.

For all standards, see the Certifications category in the Downloads page: <http://www.solaredge.com/groups/support/downloads>.

SolarEdge Home Battery 48V For Europe

BAT-05K48



Optimized storage solution for SolarEdge Home Hub and StorEdge three phase inverters

- DC coupled battery featuring comprehensive system efficiency, generating more energy to store and use for on-grid and backup* power application
- Integrates seamlessly with the complete SolarEdge Home ecosystem, offering a single source for warranty, support and training, to streamline logistics & operations
- Includes enhanced safety features for battery protection
- Solar, storage, EV charging, and smart devices all monitored and managed by a single app for optimized production, consumption, and backup* power
- Scalable solution that enables to stack up multiple battery modules per inverter for increased capacity (up to 23 kWh)
- Simple plug and play installation, with automatic SetApp-based configuration

* Backup applications are subject to local regulation and may require additional components and firmware upgrade

/ SolarEdge Home Battery 48V

For Europe

BAT-05K48

	BAT-05K48 ⁽¹⁾	UNITS
BATTERY MODULE SPECIFICATION		
Usable Energy (100% depth of discharge)	4600	Wh
Continuous Output Power (Charge/Discharge) – for a single module	2825/4096	W
Continuous Output Power (Charge/Discharge) – for multiple modules	5000/5000	W
Peak Roundtrip Efficiency	>94.5	%
Warranty ⁽²⁾	10	Years
Voltage Range	44.8 – 56.5	Vdc
Communication Interfaces	RS485 between modules, CAN bus to inverter	
Modules per Inverter	Up to 5 connected in parallel	
Battery Type	Li-Ion	
Supporting Inverter Models	See Technical Note - Compatibility Matrix for SolarEdge Home Three Phase Inverters and Batteries	
STANDARD COMPLIANCE		
Safety (Cell level)	IEC62619; UN38.3	
Safety (Module level)	UN38.3; IEC62619; IEC63056; IEC62040-1; VDE-AR-E 2510-50 ⁽³⁾	
Emissions	IEC61000-6-1; IEC61000-6-2; IEC61000-6-3; IEC61000-6-4; 61000-3-12	
MECHANICAL SPECIFICATIONS		
Dimensions (W x H x D)	540 x 500 x 240	mm
Weight	54.7	kg
Mounting	Floor stand and wall attach	
Operating Temperature ⁽⁴⁾ Charge/Discharge	-10 to +50	°C
Storage Temperature (12 months between recharge)	-10 to +45	°C
Maximum Altitude	2000	m
Enclosure Protection	IP65 / NEMA 3R - indoor and outdoor (water and dust protection)	
Cooling	Natural convection	
Noise (at 1m distance)	<25	dBA

(1) Specification applies to PN BAT-05K48M0B-01 and BAT-05K48M0B-02.

(2) For warranty details, please refer to the [SolarEdge Home Battery Limited Product Warranty](#).

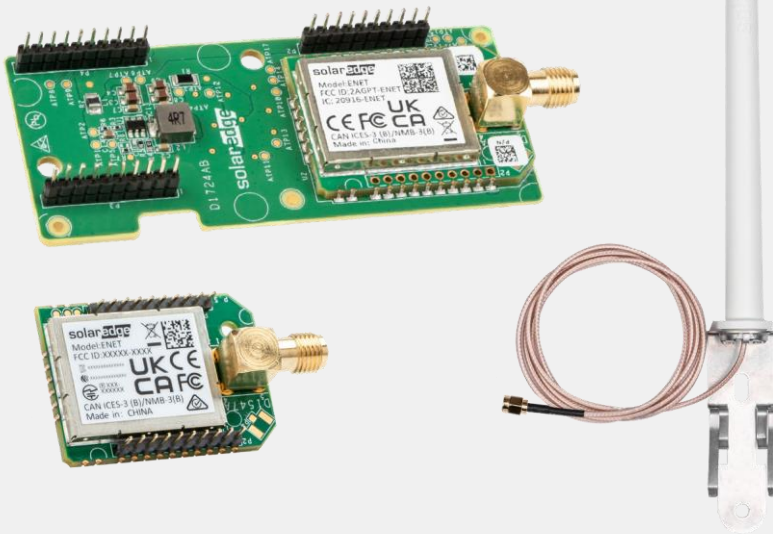
(3) Designed to meet VDE-AR-E-2510-50.

(4) Derating applies. Please note that operating the SolarEdge Home Battery at extreme temperatures for extended durations of time may void the Battery warranty coverage. Please see the [SolarEdge Home Battery Limited Product Warranty](#) for additional details.

SOLAREEDGE HOME BATTERY - ACCESSORIES (PURCHASED SEPARATELY)	
DESCRIPTION	PN
Accessory residential battery, top cover (1 required per tower)	IAC-RBAT-5KMTOP-01
Accessory residential battery, cable set battery to SolarEdge Home inverter (PN SE*K-RWB48)	IAC-RBAT-5KCNV-01
Accessory residential battery, cable set battery to StorEdge inverter (PN SE*K-RWS)	IAC-RBAT-5KCNV-02
Accessory residential battery, cable set module to module	IAC-RBAT-5KCBAT-01
Accessory residential battery, cable set tower to tower	IAC-RBAT-5KCTOW-01
Accessory residential battery, floor stand (1 required per tower)	IAC-RBAT-5KFSTD-01
Accessory 10 * Spare connector kit for Battery to Inverter connection, SolarEdge Home Battery 48V	IAC-RBAT-5KCNCT-01
Accessory 10 * Spare connector kit for Tower to Tower connection, SolarEdge Home Battery 48V	IAC-RBAT-5KCNCT-02

SolarEdge Home Network Wireless Mesh Network

Model: ENET



COMMUNICATIONS

One communication platform for seamless device connection within the SolarEdge Smart Energy Management ecosystem

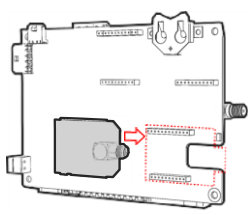
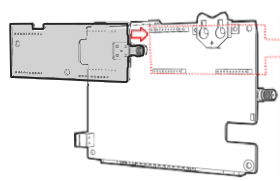
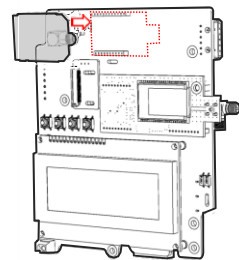
- ✓ Faster, easier, and cleaner installations*
 - ✓ Avoids the hassle of wired infrastructure with wireless connectivity between inverter and system devices
 - ✓ Simple plug and play connection
 - ✓ Automatic device detection and configuration using SetApp
- ✓ Field-proven wireless technology Mesh network
 - ✓ topology enabling long-range transmissions
 - ✓ Robust performance in challenging environments
- ✓ Connectivity you can count on
 - ✓ Reliable communications with no single point of failure (for multiple device systems)
 - ✓ Secured telemetry with advanced device authentication and data encryption
- ✓ External antenna to ensure maximum coverage

* When compared to SolarEdge installations using wired communications

solaredge.com

solaredge

/ SolarEdge Home Network Plug-In

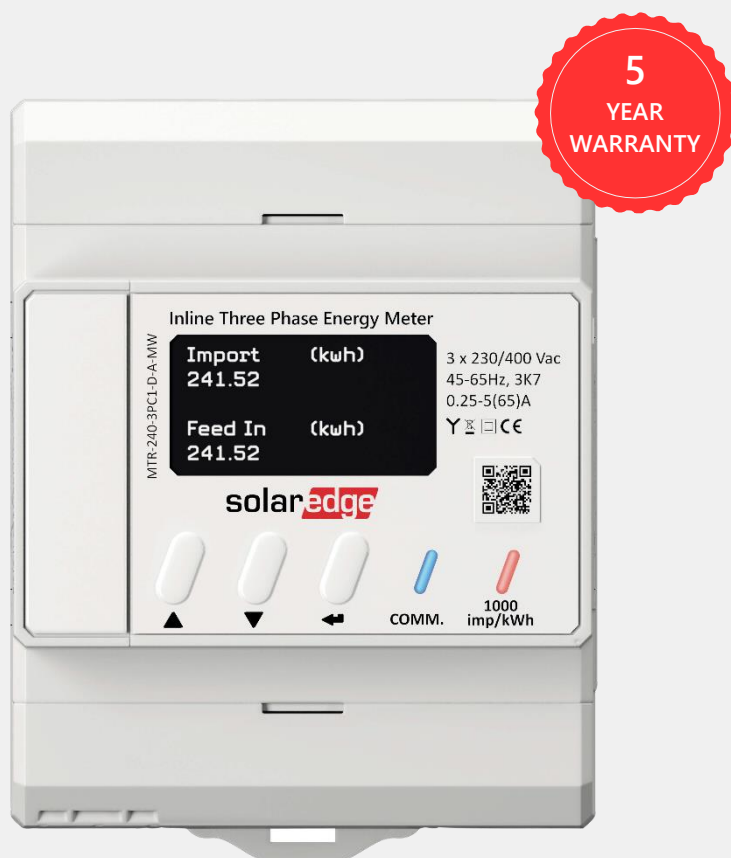
PART NUMBER		ENET-xBNP-01	ENET-xBCL-01	ENET-HBPV3D-01	UNIT
PERFORMANCE					
Transmit Power (Max)			17 ⁽¹⁾		dBm
Receiver Sensitivity			-100		dBm
EIRP with Antenna			17 ⁽¹⁾		dBm
Indoor Range (none line of sight)			50 / 160		m / ft
Frequency Band			HB 863-876, 902-930 LB 310-358, 426-445		MHz
ENVIRONMENTAL					
Operating Temperature			-40 to 185 / -40 to +85		°C / °F
Storage Temperature			-40 to 185 / -40 to +85		°C / °F
MECHANICAL					
Size		0.98 x 1.37 / 25 x 35	1.29 x 2.99 / 33 x 76	0.98 x 1.37 / 25 x 35	in / mm
POWER SUPPLY					
DC Voltage (nominal)			3.3		Vdc
Max Input Current			200		mA
ANTENNA					
Antenna Bands ⁽²⁾			HB 863 - 930 LB 310 - 445		MHz
Antenna Type			Outdoor		
Antenna Connector			RP-SMA		
VSWR			≤4.0		dB
Gain			2		dB
Polarization			Vertical		
Material			PC Lexan 503R-WH5151L or WH8G952 Sabic		
Dimensions (Length x Diameter)			7.87 x 0.78 / 200 x 20		mm / in
COMPLIANCE					
US	EMC / EMI and Radio		FCC Part 15B, FCC Part 15C		
Canada	EMC / EMI		ICES-003		
	Radio		RSS-247 for SRD, RSS-102 MPE report		
Europe	EMC / EMI		CISPR 32, EN 55032, EN 55035, EN 301 489-1, EN 301 489-3		
	Radio		EN 62311 (EMF test), EN 300-220-1, EN 300-220-2		
Australia	EMC / EMI		CISPR 32 AS/NZS CISPR 32, AS/NZS 4268		
	Radio		AS/NZS 4268		
Japan	EMC / EMI		VCCI-CISPR 32		
	Radio		ARIB STD-T93, JAPAN EXTREMELY LOW POWER		
Korea	EMC / EMI and Radio		Korea RF (KN 32/35)		
Taiwan	EMC / EMI and Radio		NCC LP0002		
Compatibility ⁽³⁾		<p>SolarEdge Home Network-ready inverter with the following part number format: SE...-...BExx SE...-...BZxx SE...-...BXxx SE...-...BLxx For example: SE7K-AUBTEBEU4</p> 	<p>SetApp-enabled inverter</p> <p>Note: Plugs into the cellular socket. Cellular plug-in or ZigBee plug-in cannot be installed in parallel</p> 	<p>SetApp-enabled LCD inverter requires replacement communication board with LCD</p> 	

(1) Transmission power / EIRP may be higher according to each country's standard requirements

(2) External antenna is provided with the SolarEdge Home Network Plug-In kit

(3) For details about selecting the appropriate SolarEdge Home Network Plug-in kit for your inverter, see the [SolarEdge Home Network Plug-in Kit Selection technical note](#).

SolarEdge Home Inline Meter



Grow your revenues with an easily installed metering solution that fits comfortably into standard electrical DIN-rail cabinets

- Performs export/import, production, and consumption energy readings with 1% accuracy
- Includes integrated current transformers for faster installations, reduced labor costs, and simplified logistics
- Easier installations using SolarEdge Home Network to communicate wirelessly with the inverter (RS485 connectivity is optional)
- Supports export/import limitation and SolarEdge Smart Energy applications
- Integrates smoothly and easily with SolarEdge Smart Energy solutions
- Enables direct connection of up to 65A per phase, for single and three phase grid connections
- Quick setup with automatic meter detection by the SolarEdge inverter
- Intuitive meter configuration and visibility to meter status using the SetApp mobile app

/ SolarEdge Home Inline Meter

Part Number		MTR-240-3PC1-D-A-MW ⁽¹⁾	MTR-240-1PC1-DW-MW ⁽¹⁾	UNITS
Model Number		MTR EU3	MTR EU1	
ELECTRICAL SERVICE				
Nominal Voltage		3 x 230/400	1 x 230	Vac
Voltage Range	Line to Line	320 – 460	-	Vac
	Line to Neutral		184 – 264.5	
Supported Grids		L1 / L2 / L3 / N (WYE)	L / N	
Power Consumption (max)	SolarEdge Home Network Wireless Connection	< 2.0		W
	RS485 Wired Connection	< 1.8		
AC Frequency		45 – 65		Hz
Maximum Current (Imax)		65		A
Transitional Current (Itr)		0.5		A
Starting Current (Ist)		20		mA
Minimum Current (Imin)		0.25		A
Reference Current (Iref)		5		A
Active Energy Accuracy		EN54070 Class B ⁽²⁾ ; IEC 62053-21 Class 1		
Active Energy Accuracy Error	Itr ≤ I < Imax	1		%
	Imin ≤ I < Itr	1.5		
Reactive Energy Accuracy		IEC 62053-23 Class 2		
Reactive Energy Accuracy Error	Itr ≤ I < Imax	2		%
	Imin ≤ I < Itr	2.5		
Over-voltage		CAT III 600		Vac
RS485 COMMUNICATION				
RS485 Terminal Cross Section		0.2 – 2		mm ²
Interface		RS485 half duplex, 3 wires (A, B, GND)		
Protocol		MODBUS RTU		
Power Register Update Resolution		<200		ms
All Other Registers		< 4		sec
RS485 Line Termination		120 (selectable)		Ω
WIRELESS COMMUNICATION⁽³⁾				
Operating Frequency Range		863 – 870 (EU)		MHz
		916 – 924 (AUS)		
Modulation		OQPSK		
Antenna Connector		SMA-RP		
External Antenna Mounting ⁽⁴⁾		Wall mount with bracket		
EIRP with Antenna		14 (EU)		dBm
		20 (AUS)		
PULSE DISPLAY				
Pulse Frequency		1000		imp / kWh
Pulse Length		5 (min), 80 (max)		ms
INSTALLATION/MECHANICAL				
Display		8 digits		
Protection Rating (Indoor)		IP51		
Mounting Support		DIN rail		
Weight		320		g
Material		PC Lexan 503R		
Dimensions (W x H x D)		72 x 90 x 58		mm
AC Terminal Cross Section Area		1.5 – 25		mm ²

(1) Supported from inverter software version 4.14.xx and higher.

(2) EN54070 Class B, when AC inputs are connected to the upper terminal blocks. EN54070 Class A, when AC inputs are connected to the lower terminal blocks.

(3) SolarEdge Home Network wireless communication requires inverter support.

(4) External antenna kit should be purchased separately (PN: SE-ANT-ENET-HB-01).

/ SolarEdge Home Inline Meter

Part Number	MTR-240-3PC1-D-A-MW	MTR-240-1PC1-DW-MW	
Model Number	MTR EU3	MTR EU1	UNITS
ENVIRONMENTAL			
Operating Temperature	-40 to +70 Suitable for outdoor installations		°C
Storage Temperature	-40 to +85		°C
Relative Humidity (non-condensing)	75 (yearly average) 95 (30 days/year)		%
Installation Altitude	< 2000		m
Pollution Degree	2		
STANDARD COMPLIANCE			
Safety	UL 61010-1; CAN/CSA-C22.2 No. 61010-1-04; IEC 61010-1		
Immunity	EN 61000-4-8; EN 61000-4-2; EN 61000-4-3; EN 61000-4-4; EN 61000-4-5; EN 61000-4-6; EN 61000-4-11		
Emissions	FCC Part 15, Class B; EN 55032 Class B; EN 61000-3-2; EN 61000-3-3		

SolarEdge is a global leader in smart energy technology. By leveraging world-class engineering capabilities and with a relentless focus on innovation, SolarEdge creates smart energy solutions that power our lives and drive future progress.

SolarEdge developed an intelligent inverter solution that changed the way power is harvested and managed in photovoltaic (PV) systems. The SolarEdge DC optimized inverter maximizes power generation while lowering the cost of energy produced by the PV system.

Continuing to advance smart energy, SolarEdge addresses a broad range of energy market segments through its PV, storage, EV charging, UPS, and grid services solutions.

-  SolarEdge
-  @SolarEdgePV
-  @SolarEdgePV
-  SolarEdgePV
-  SolarEdge
-  www.solaredge.com/corporate/contact

solaredge.com

© SolarEdge Technologies, Ltd. All rights reserved. SOLAREEDGE, the SolarEdge logo, OPTIMIZED BY SOLAREEDGE are trademarks or registered trademarks of SolarEdge Technologies, Inc. All other trademarks mentioned herein are trademarks of their respective owners. Date: November 15, 2022 DS-000001-ENG Subject to change without notice.

Cautionary Note Regarding Market Data and Industry Forecasts: This brochure may contain market data and industry forecasts from certain third-party sources. This information is based on industry surveys and the preparer's expertise in the industry and there can be no assurance that any such market data is accurate or that any such industry forecasts will be achieved. Although we have not independently verified the accuracy of such market data and industry forecasts, we believe that the market data is reliable and that the industry forecasts are reasonable.

